

Instructions: PMB-01-1211

Parts list:

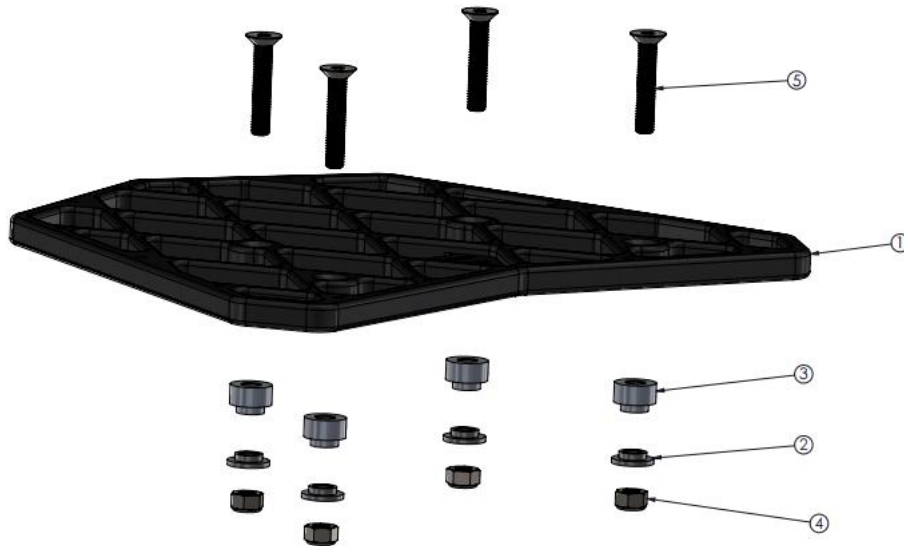
- 1-Top
- 4-13mm spacers
- 4-5mm spacers
- 4-M8 nuts
- 4-M8x40 bolts

NOTE: We recommend using a removable thread locking agent on all bolts.

1. Insert thicker 13mm stepped spacers on to the stock rear carrier with the smaller side facing down.
2. Place the rack top on top of the spacers and insert the 4 bolts.
3. Tighten the bolts with the 5mm stepped washers and M8 nuts on the bottom side. Make sure the smaller portion of these spacers is facing upward.
4. Make sure that all bolts are tight. Periodically check the mounting bolts to make sure they are tight.



CAUTION: As with all racks on motorcycles, they should not have excess amounts of weight put on them. Excess weight can damage the rear sub-frame of the motorcycle.



See our entire product line at promotobillet.com