

## 22-3-603 Footpeg Installation Addendum

Thank you for your purchase! We are confident that you will be pleased with the quality of our product.

### **Parts List:**

2-Fastway Footpegs (1-left, 1-right)  
2-Footpeg Collars  
2-FKMS Bolts (To adjust peg angle)  
1-Gold Spring  
1-Silver Spring  
1-Cleat Kit (Contains enough cleats for both pegs)  
2-.186" collar spacers  
2-.136" collar spacers  
4-0.040 FKMS Shims  
4-0.020 FKMS Shims  
1-Thread Locking Agent

**NOTE:** We recommend using a thread-locking agent on all bolt threads.

### **Before you begin:**

Be sure to reference the primary "Footpeg Installation Instructions" below for peg assembly, installation, and adjustment.

Read the main instructions carefully before starting the installation. If you do not have all the required tools or are not comfortable performing the work involved, have your dealer install the footpegs for you.

The Fastway footpegs for the BMW contain various spacers to allow installation on numerous years of bikes. The following addendum explains the use of the washers to provide the best fitment for each model.

**NOTE:** Installation on some GS650's may require slight filing of the foot peg clevis sides to ensure that the foot peg can fold up freely. Please also check your pin to ensure you have no burrs on it binding up the collar or spacers.

F 700-800 GS Models: *\*\*Footpeg may interfere with left kickstand bracket when folding up\*\**

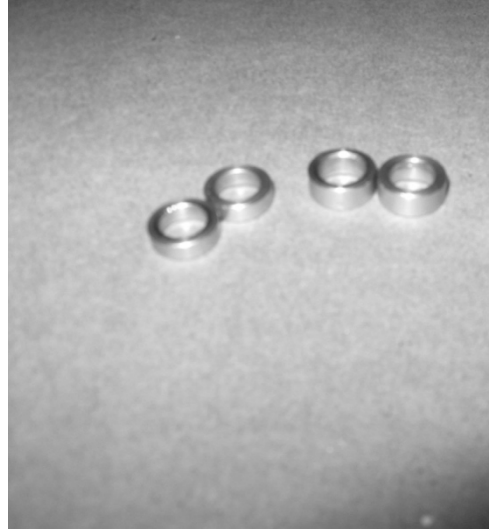
### **Installation notes:**

1. Figure 1 shows the peg installed in lowboy position without the spring and without any collar spacers. If the peg slides on the bike bracket with 1mm or less gap between the collar and the bracket, no collar spacers are needed. If gap is larger than 1mm, spacers may be added to eliminate the gap. In lowboy position, you must install the spacers on the top side of the footpeg collar as shown. In standard position, the spacers may be installed on either side of the collar. Installing the spacer on the flush side of the collar in lowboy position could allow the collar to slide out of the peg. (Note: The motorcycle in Figure 1 may not match your particular model and is shown for reference only.)
2. Figure 2 shows the supplied collar spacers. Please see the main instructions below for explanation on FKMS adjustment and FKMS shims.

Figure 1



Figure 2



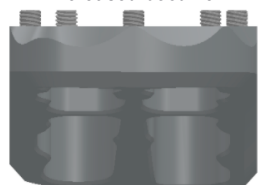
## Footpeg Installation Instructions

Thank you for your purchase! We are confident that you will be pleased with the quality of our product.

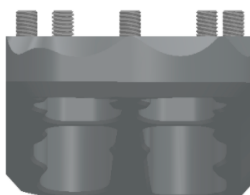
1. Some models include an instruction addendum. Be sure to use the addendum along with this instruction sheet if one is included.
2. The Universal Collar System enables you to set up the footpeg up at either the standard stock position or in a lower configuration. Insert the collar in the footpeg mounting hole from the bottom for a (standard) stock peg height, or from the top for the lower configuration which moves the peg down and back. Collars will require a little pressure to install as they are a tapered press fit. This can be accomplished using the supplied cylinder tool and a vise or hammer. To remove the collar, simply use the supplied cylinder tool from the opposite side.
3. After you have installed the collar in the desired position, install the FKMS (Camber) bolt into each peg. Mount the peg on the bike without the return spring and check the angle of the peg. Add shims behind the camber bolt until the pegs are leveled, or if you choose you can add more shims so you can have a "knee-in" effect which some riders prefer. Once you are satisfied with the mounting position remove the FKMS bolt and clean the bolt and footpeg threads with primer or contact cleaner. Apply a thread locking compound on the bolt's thread and reinstall. Be sure to frequently check the camber bolts for tightness!
4. Install footpeg cleats in the pegs using the supplied thread locking compound. Two sizes are included for additional adjustment.
5. Mount the pegs to the bike re-using the stock frame pins. **Note:** Silver spring placement on the right, Gold on the left when mounting the pegs in the lower position and Silver spring on the left and Gold on the right when mounting pegs in the standard position. Spring placement differs slightly on Adventure or Evolution Air pegs which fit in a milled hole. Some bike models may require the spring to be installed inside the bracket rather than hooked on the edge.

### Cleat Positioning

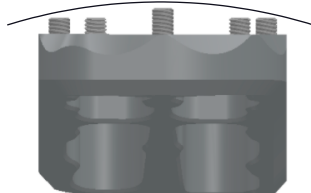
All 10mm Cleats  
Low profile and  
increased boot life



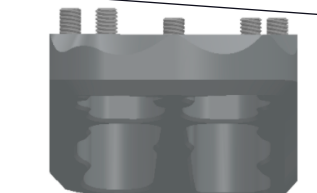
All 12mm Cleats  
Aggressive traction



Tall Center Row  
Keep feet locked on the  
peg with room to roll



Tall Back Row  
More toe freedom for  
braking and shifting



Cleats can be swapped out anywhere on the peg to keep your feet in exactly the right place.

**Fastway footpegs -  
perfect feel for any setup!**

F5 & F7 cleats are sold separately.

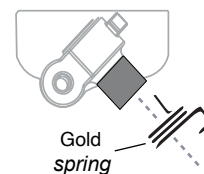
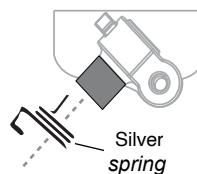


F5 Cleat

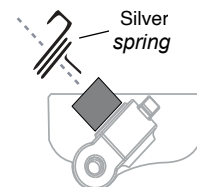
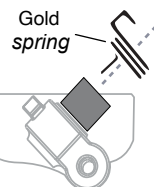


F7 Cleat

### ▼ STANDARD ▼



### ▼ LO-BOY ▼

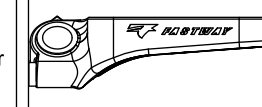
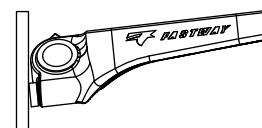


### FKMS - Fast Kamber Mounting System - (patent # 6,339,972)

Our patented FKMS- Fast Kamber Mounting System uses shims to allow adjustment of the upward or downward tilt of your pegs.

Use more shims=knees closer to the bike; less shims=knees further apart.

Our new improved grade 8 zinc coated steel FKMS bolts are more durable than ever for long life and ease of adjustment.



### FKMS Bolt

