



## 22-3-723 Footpeg Installation Addendum

Thank you for your purchase! We are confident that you will be pleased with the quality of our product.

### **Parts List:**

2-Fastway Footpegs (1-left, 1-right)  
2-Footpeg Collars  
2-FKMS Bolts (To adjust peg angle)  
2-Cotter Pins  
1-Gold Spring  
1-Silver Spring  
1-Cleat Kit (Contains enough cleats for both pegs)  
2-Brackets (1-left, 1-right)  
2-0.136" Shims  
4-0.040 FKMS Shims  
4-0.020 FKMS Shims  
1-Insert Tool  
1-Thread Locking Agent

### **Required Tools:**

Needle-nose Pliers  
14mm Wrench (or socket w/ratchet)

**NOTE:** We recommend using a thread-locking agent on all bolt threads.

### **Before you begin:**

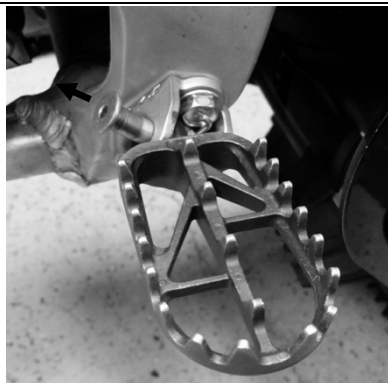
Be sure to reference the primary "Footpeg Installation Instructions" below for peg assembly, installation, and adjustment.

Read the main instructions carefully before starting the installation. If you do not have all the required tools or are not comfortable performing the work involved, have your dealer install the footpegs for you.

### **To install your new footpegs:**

1. Secure the motorcycle with a self-supporting stand to prevent the bike from falling over during the installation process.
2. Remove the cotter pin from the footpeg pivot pin.
3. Remove the footpeg pivot pin (Figure 1).
4. Remove stock footpeg bracket by using the 14mm socket to remove the four bolts (two on each side) (Figure 2). Use Figure 3 to determine between the left and right brackets.
5. Use the 14mm socket and the four stock bolts to install the new footpeg brackets in their respective positions. Use a thread locking compound and tighten to factory specifications. **NOTE: Make sure to install the correct bracket in the correct location so the Fastway footpegs will fit properly.**
6. Using the stock footpeg pivot pin and the supplied Fastway footpeg Installation Instructions, assemble the footpeg collars and spacers and install on the newly installed footpeg brackets (Figure 4 and 5).

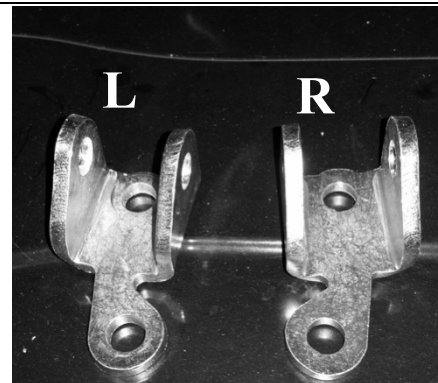
**NOTE:** After the first ride, re-tighten the footpeg bracket bolts to the factory recommended settings.



**Figure 1.** Depicts the stock footpeg pivot pin, and the direction to pull in order to remove the footpeg pivot pin.



**Figure 2.** Depicts the **left** stock footpeg bracket and the accompanying two M10x1.25 bolts.



**Figure 3.** Depicts the new footpeg brackets and the differences between the right and left bracket.



**Figure 4.** Depicts the **left** new bracket installed with the stock M10x1.25 bolts.



**Figure 5.** Depicts the stock footpeg pivot pin being inserted into the collar of a Fastway footpeg.



**Figure 6.** Depicts a Fastway footpeg installed in conjunction with the new footpeg bracket.

## Footpeg Installation Instructions

Thank you for your purchase! We are confident that you will be pleased with the quality of our product.

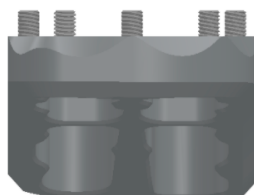
1. Some models include an instruction addendum. Be sure to use the addendum along with this instruction sheet if one is included.
2. The Universal Collar System enables you to set up the footpeg up at either the standard stock position or in a lower configuration. Insert the collar in the footpeg mounting hole from the bottom for a (standard) stock peg height, or from the top for the lower configuration which moves the peg down and back. Collars will require a little pressure to install as they are a tapered press fit. This can be accomplished using the supplied cylinder tool and a vise or hammer. To remove the collar, simply use the supplied cylinder tool from the opposite side.
3. After you have installed the collar in the desired position, install the FKMS (Camber) bolt into each peg. Mount the peg on the bike without the return spring and check the angle of the peg. Add shims behind the camber bolt until the pegs are leveled, or if you choose you can add more shims so you can have a "knee-in" effect which some riders prefer. Once you are satisfied with the mounting position remove the FKMS bolt and clean the bolt and footpeg threads with primer or contact cleaner. Apply a thread locking compound on the bolt's thread and reinstall. Be sure to frequently check the camber bolts for tightness!
4. Install footpeg cleats in the pegs using the supplied thread locking compound. Two sizes are included for additional adjustment.
5. Mount the pegs to the bike re-using the stock frame pins. **Note:** Silver spring placement on the right, Gold on the left when mounting the pegs in the lower position and Silver spring on the left and Gold on the right when mounting pegs in the standard position. Spring placement differs slightly on Adventure or Evolution Air pegs which fit in a milled hole. Some bike models may require the spring to be installed inside the bracket rather than hooked on the edge.

### Cleat Positioning

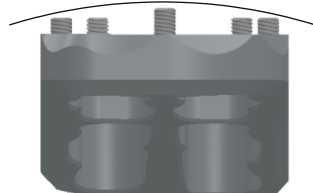
All 10mm Cleats  
Low profile and  
increased boot life



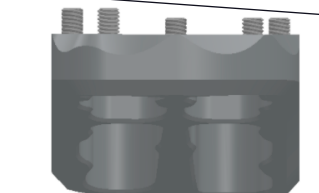
All 12mm Cleats  
Aggressive traction



Tall Center Row  
Keep feet locked on the  
peg with room to roll



Tall Back Row  
More toe freedom for  
braking and shifting



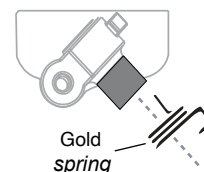
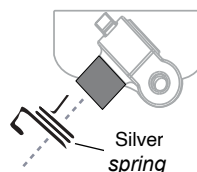
Cleats can be swapped out anywhere on the peg to keep your feet in exactly the right place.

**Fastway footpegs -  
perfect feel for any setup!**

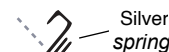
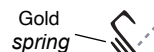
F5 & F7 cleats are sold separately.



### ▼ STANDARD ▼



### ▼ LO-BOY ▼

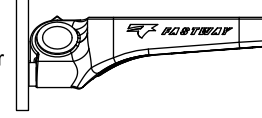
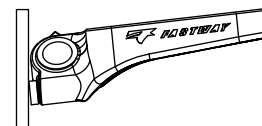


### FKMS - Fast Kamber Mounting System - (patent # 6,339,972)

Our patented FKMS- Fast Kamber Mounting System uses shims to allow adjustment of the upward or downward tilt of your pegs.

Use more shims=knees closer to the bike; less shims=knees further apart.

Our new improved grade 8 zinc coated steel FKMS bolts are more durable than ever for long life and ease of adjustment.



FKMS Bolt

