

Instructions: PMB-01-3107

Parts List: (1) Spark Arrestor Base, (2) M6x55 Bolts, (1) Screen

NOTE: If you do not have the proper tools, have your dealer install the spark arrestor for you.

Installation Instructions:

1. Remove the two bolts holding the stock nozzle in place. (Figure 1)
2. Pull the stock nozzle out of the canister.
3. In order to allow the inner core to align with your new Spark Arrestor Base, loosen the bolt holding the canister to the sub frame. (Figure 2)
4. Install the Spark Arrestor Base into the canister.
5. Insert the Spark Arrestor Screen into Spark Arrestor Base.
6. Install and tighten the stock nozzle with the two supplied M6x55 bolts and stock lock washers. (Figure 3)
7. Tighten the bolt holding the canister to the sub frame.



Figure 1



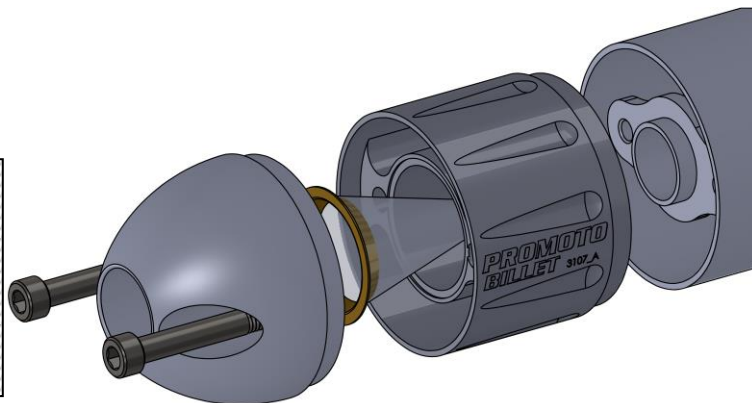
Figure 2



Figure 3

CAUTION:

You must check the condition of the spark arrestor often!
Your spark arrestor will not function properly if there are holes in the screen!



See our entire product line at promotobillet.com