

Instructions – PMB-01-4108

Thank you for your purchase! We are confident that you will be pleased with the quality of our product.

Parts List:

1-Spark Arrestor Base
1-RMZ250 Adapter
1-Nozzle
1-Screen
3-M6 Bolts
8-Self-tapping Screws

Tools List:

Drill
13/64" Drill Bit
Hammer
Heat Gun
Center Punch
High-Temp Silicone Sealant

Figure 1A



NOTE: Read the instructions carefully before starting the installation. **You will not be able to re-use the stock end cap after installing this product!** If you do not have all the required tools or are not comfortable performing the work involved, have your dealer install the spark arrestor for you.

To install your new spark arrestor:

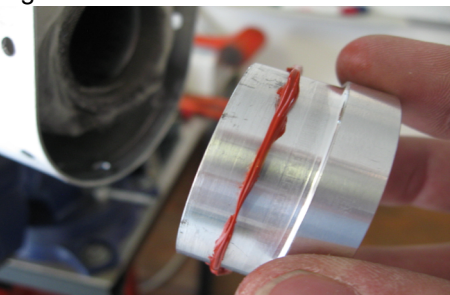
1. Remove exhaust pipe from the bike and clamp the mounting tab securely in a vise. Place protective material between the vise jaws and the mount to prevent any marring of the aluminum mount.
2. Using a 13/64" drill bit, drill out the existing rivets holding the stock end cap in place. You do not need to drill all the way through the muffler canister, but you must make sure to drill deep enough to remove the head of the rivet. **Figure 1A.**
3. Using a center punch, or similar device, and a hammer, push the remainder of each rivet through the hole and out of the stock end cap.
4. Remove the stock end cap. Be sure to apply even pressure and do not damage the pipe. If stock end cap is difficult to remove, if you are having problems removing the stock caps, cut the existing sealant with a sharp knife and/or use a heat gun on the canister sleeves to make removal easier. If necessary, use a pair of locking pliers to grip onto the stock end cap. **Figure 1B.**

Figure 1B



NOTE: Remove all pieces of the old rivets from the packing material inside of the muffler canister.

Figure 2



5. **RMZ250 ONLY:** Apply a thin coat of high temperature silicone to the inner step on the adapter ring. **Figure 2.** Slide the ring into the inner core.
6. **ALL MODELS:** Apply some high temperature silicone sealant to the outer stepped portion of the spark arrestor base, and a generous amount to the surface where the perforated inner core will be retained. **Figure 3A and 3B.** You must use high temperature silicone to prevent vibration and damage to the canister.

Figure 3A

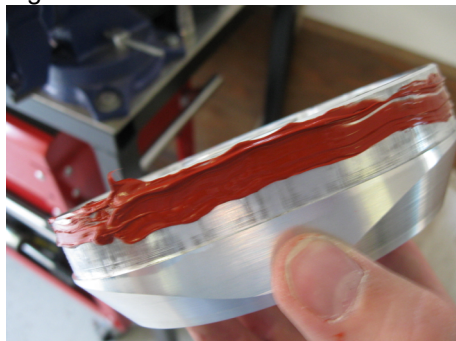


Figure 3B

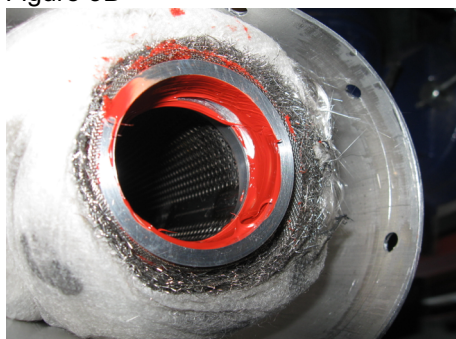


Figure 4



Figure 5



7. Carefully slide the new base into the exhaust canister. **Figure 4.**
8. Lightly tap everything together with a rubber mallet and use a piece of cardboard or similar material to protect the finish on the spark arrestor base. **Figure 5.**
9. Wipe the excess sealant off the seams of the spark arrestor base. If you do not, it will set and harden when the exhaust heats up.
10. Install one self-tapping screw at a time by drilling a 13/64" hole at each rivet location. **Figure 6.** Each time you drill a new hole and install a self-tapping screw, make sure that the base is pushed up tight to the muffler. *Note: We recommend using lubricant for the self-tapping screws, such as WD-40®.*
11. **RMZ450 ONLY:** After installing self-tapping screws in the four stock locations, drill four 13/64" holes and install four additional self-tapping screws. Space the additional self-tapping screws evenly between the stock rivets.
12. You must use high temperature RTV silicone to prevent vibration and damage to the canister. Coat the outside lip of the spark arrestor base that installs into the muffler canister and the outside lip where the inner core support will rest.
13. Insert the spark arrestor screen and install the turndown nozzle with three M6 bolts.

NOTE: Your new Fastway by Pro Moto Billet spark arrestor is coated with colored anodized finish. Anodizing will fade by prolonged exposure to sunlight. To insure your spark arrestor remains looking it's best, do not store in direct sunlight and remove any mud or debris as soon after riding as possible.

Figure 6



CAUTION:

You must check the condition of the spark arrestor often! Your spark arrestor will not function properly if there are holes in the screen!